

 **BURRIS**<sup>®</sup>

# ***SPEEDBEAD***

## **Installation Instructions**

### **Beretta**

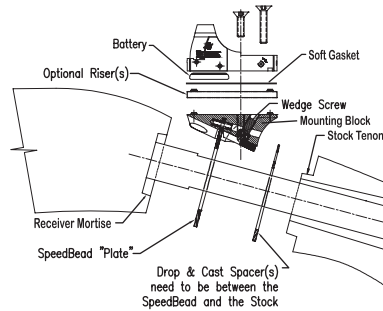
Items 300244, 300246, 300251, 300256

- Xtrema
- Xtrema 2
- Urika
- Urika 2
- 391 series
- 391 Silver/Gold  
Mallard
- 3901 12 ga
- 391 20 ga



## SpeedBead - Beretta

- Xtrema
- Xtrema 2
- Urika
- Urika 2
- 391 series
- 391 Silver/Gold Mallard
- 391 20 ga
- 3901 12 ga





It is best if you adjust the stock fit (cast and drop) before mounting the SpeedBead. Your shotgun owners manual has excellent instructions for this.

1. Remove the recoil pad.
2. Remove the stock from the receiver. Keep any **Drop & Cast Spacers** on the **Stock Tenon** at the front of the stock in the correct orientation.
3. Slide the SpeedBead mount on to the stock by placing the mounting block well back and close to its final position first, then push down to compress the foam padding and bring the bottom portion of the **Plate** over the **Stock Tenon**. Be sure any **Drop & Cast Spacers** are between the SpeedBead **Plate** and the stock.
4. Remount the stock on the receiver with the SpeedBead **Plate** sandwiched between the stock and the receiver. Be sure the **Stock Tenon** has engaged the **Receiver Mortise** and then tighten the stock bolt to eliminate all the gaps between the rear of the receiver, the **Plate**, any **Drop & Cast Spacers**, and the stock.
5. Reinstall the recoil pad.



### 6. SpeedBead Base Alignment

Using the hex wrench, tighten the **Wedge Screw**. Slightly snug is plenty tight and will prevent scarring of the stock beneath the SpeedBead mount.

Position the **soft gasket** on top of the mounting block or optional riser, aligning the holes to the pins.



Put the FastFire Sight, with **battery** installed, on the SpeedBead Base and hold the sight firmly down against the base. Turn on the FastFire sight. Shoulder the shotgun. The Red Dot should appear somewhere close to the front bead or sight of the shotgun. If the Red Dot is way above or below the bead, remove the FastFire sight from the SpeedBead base and tighten or loosen the **Wedge Screw** (tighten to lower the Red Dot, loosen to raise the Red Dot.) Hold the FastFire on the SpeedBead base and re-check for approximate alignment. Once you are satisfied with the alignment (more precision final sighting is to be done with the FastFire windage and elevation adjustments), fasten the FastFire sight to the base with the provided screws.

## 7. FastFire Sight Adjustments

Use the provided screwdriver to FIRST loosen the FastFire lock screws, THEN, using the windage & elevation screws, adjust the Red Dot to be directly "on" the barrel bead. Look down the barrel rib as if you were shooting the shotgun when making adjustments. The Speed-



Bead system is designed such that the Red Dot is either right on the face of the shotgun's bead or just slightly above the bead. If you choose to utilize the provided spacers, the red dot should be aligned approximately the same distance above the shotgun's bead as the thickness of the spacer. Tighten the lock screws. Finish zeroing at the range. **For additional information about the FastFire sight, see the included FastFire II booklet.**

8. **Risers** and longer screws are provided with your SpeedBead. The advantages of SpeedBead are increased with the SpeedBead window a little higher than the front bead because it allows you to see and lead rising targets faster and to engage them accurately without covering them up. Choose either the 1/8" thick or 1/4" thick riser (or you can use both for 3/8") and install on top of the SpeedBead mount.

**Note:** If you are using risers place the soft gasket on top of the riser before installing the FastFire.

9. Insert the **battery** into the bottom of the FastFire Sight. Mount the FastFire sight to the SpeedBead mount using the provided short screws and lock washers when NOT using the risers, or the long screws and lock washers when using the **riser(s)**.

### Operating Notes:

The SpeedBead system is virtually parallax free. Once sighted-in, no matter where in the window the Red Dot appears, wherever the Red Dot is pointed is where the shot pattern will go. Do not be concerned if the Red Dot is not in the center of the window when shooting. Just get the Red Dot where you want it in relation to the target and take the shot.