



FIND WHAT MATTERS

FASTFIRE™ 2

4 MOA Red Dot Reflex Sight



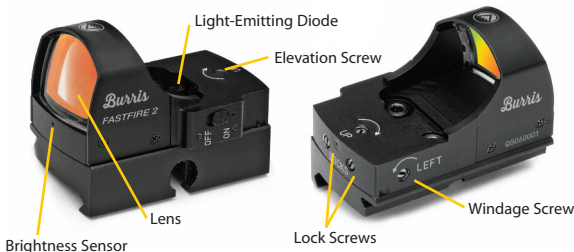
User Guide

FastFire™ 2

Red Dot Reflex Sight

Congratulations on purchasing the Burris® FastFire 2! This versatile red dot reflex sight will be the perfect fast-action sighting solution for your handgun, rifle or shotgun. You will enjoy the following features in your FastFire 2 sight:

- **Compact & Lightweight.** Weighing less than 1 ounce, the FastFire 2 won't affect firearm balance or handling. The frame is built from stainless steel, bronze, and anodized aluminum for ultimate reliability and recoil resistance.
- **1x Magnification.** The parallax-free, 1x FastFire 2 allows for both-eyes-open shooting, for enhanced awareness and better accuracy.
- **4 MOA Aiming Dot.** The bright red 4 MOA dot allows for fast target acquisition and easy aiming.
- **Automatic Brightness Adjustment.** Automatically adjusts the brightness of the red dot to match the environmental conditions.
- **Windage & Elevation Adjustments.** Easy-to-use scale disc lets you fine-tune your point-of-aim.



Operating Instructions

For optimum performance and to prevent damage to this precision instrument, carefully follow all instructions.

Package Contents:

- 2 #6x48 Screws with Torx® socket head for installing the sight onto the mounting plate
- 1 Torx® Wrench
- 1 Screwdriver
- 1 Adjusting Scale Disc
- 1 Protective Cap
- 1 Lithium Battery 3V (CR2032)
- 1 Gasket Plate
- User Guide
- Weaver/Picatinny-Style Mount

Specifications:

- Magnification: 1.07X
- Sight Window: 21mm x 15mm; .82" x .59"
- Elevation adjustment range: 115 MOA
- Windage adjustment range: 86 MOA
- Set value for one scale division: 1 MOA with 60 scale revolutions/turn
- Subtension of the aiming dot: 4 MOA
- Recoil resistance: At least 1000 G's
- Operating Temperature Range: -10°F to +130°F (-25°C to +55°C)
- Storage Temperature Range: -40°F to +160°F (-40°C to +70°C)
- Power Supply: 3V with one CR 2032 Lithium battery
- Dimensions: (LxWxH) 1.8"x1.0"x0.9" (46mm x 25.4mm x 23.7mm)
- Weight (in operating condition without mounting materials): 0.9 oz. (25 grams)

Torx® is a registered trademark of Camcar/Textron

Cautions and Warnings

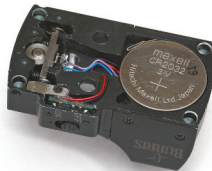
Make sure the firearm is unloaded before mounting the optic. Do not look through the sight directly into the sun, light arcs, or other very high-intensity light sources. Keep away from children.

Remove dirt by blowing it off or use a very soft lens brush. Use lens cleaning tissues on the optical surfaces.

Battery Installation

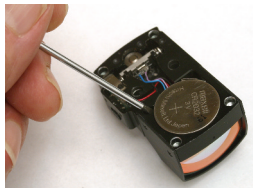
The FastFire 2 operates with one commercially available 3V Lithium battery (CR1632). Do not attempt to substitute two CR2016 batteries.

To insert or replace the battery, turn the FastFire 2 upside down. If removing a battery, place the wrench or screwdriver into the notch and pry the battery loose. Insert the new battery into the receptacle located on the underside of the housing oriented so that the positive pole on the battery oriented label is visible. A magnet draws the battery onto the contact plate. Keep the contact surface clean, cleaning with alcohol if necessary.



Power-Saving Mode

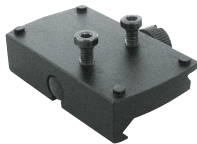
To save power, simply turn the ON/OFF switch to OFF.



Installation

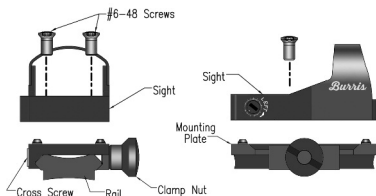
Installation on most rifles, carbines, and some handguns requires the included Picatinny/ Weaver Mounting Plate. Most other handguns, shotguns and rifles require a different mounting plate. See chart and special instructions below.

- 410335 Mount - Picatinny / Weaver (included)
- 410321 Mount - 1911 Standard
- 410322 Mount - 1911 Adjustable / Novak
- 410323 Mount - Kimber Standard & Bomar
- 410324 Mount - Beretta 92/96 /90-TWO/ Taurus PT99
- 410325 Mount - Beretta PX4 Storm
- 410326 Mount - Glock- all
- 410327 Mount - Sig Sauer P226
- 410328 Mount - Springfield XD
- 410329 Mount - Ruger Mark I, II, III
- 410331 Mount - Sako (requires Picatinny Mount)
- 410332 Mount - Ruger Rifles, Super Redhawk and Super Blackhawk Hunter
- 410330 Mount - Picatinny Protector
- 410334 Mount - Winchester Model 94 Rifle, pre-drilled & tapped
- 410333 Mount - Marlin Lever Rifle, Models 336, 444, 1895, pre-drilled & tapped
- 410336 Mount - Smith & Wesson M&P
- 410635 Xtreme Tactical Base - Sako Rifles (also requires Picatinny mount)



Picatinny / Weaver Mount

Place the Gasket Plate metal side down onto the Mounting Plate so that the screw holes align. Install battery in the Fastfire II and place the Sight on the Gasket Plate so that the screw holes in it also align. Install the two #6-48 Screws and tighten to 12 inch pounds. Loosen the Clamp Nut on the mount. Place the mount on the Rail with the Cross Screw located in the desired slot. Check to be sure all the clamping edges are engaged. Keep a little pressure on the sight toward the muzzle as you tighten the Clamp Nut to approximately 20 in.-lbs.



Operating Procedure

Elevation and Windage Adjustment

There are separate adjustment controls for elevation and windage: elevation is on the top of the sight, and windage is on the right side.



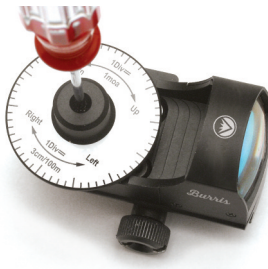
Loosen the two LOCK screws counter clockwise 1/2 turn each using the provided screwdriver. Turn the slotted "UP" or "LEFT" screws with the provided adjusting disc and screwdriver. The windage adjustment mechanism has limit stops at both ends.

Note that the elevation adjustment downward stop is available only when the unit is installed on a mounting plate. Screwing either adjustment into a stop will lock motion of the other adjustment.

Zeroing the Point-of-Impact

Adjust point-of-impact by using the provided scale disc with integrated screwdriver.

Put the scale disc onto the elevation or windage adjustment screws using any edge on the sight as the reference line. The scale disc allows defined elevation and windage adjustment in both directions of rotation. The direction of the shift of the point-of-impact is indicated on the FastFire 2 sight and on the scale disc.



One scale division of this disc (or tick mark) corresponds to 1 minute of angle (MOA), or approximately 1 inch at 100 yards. For other distances, this value is proportional, for example: .5 inch at 50 yards or 0.1 inch at 10 yards. Before shooting, make sure to tighten the lock screws on the rear of the FastFire 2 with the provided screwdriver, making sure not to over-tighten.



Integrated Control Electronics

The integrated control circuit adjusts the brightness of the aiming dot according to surrounding light levels.

The brightness sensor on the front of the sight senses the light level in the direction of the target and modifies the intensity of the dot accordingly so that it is not overpowering in low light while remaining highly visible in bright daylight.

Be careful not to obstruct the sensor. Clean if necessary. Covering the sensor with your finger will affect the electronics only slightly. If you wish to check its function, cover the sensor with the protective cover.

To ensure immediate functionality, the light-emitting diode remains on even in complete darkness but uses such a small amount of energy that you can expect a service life of up to 4 years.

Ambient Conditions

The FastFire 2 is water-resistant and is usable even after being accidentally submerged. However, after exposure to salty or dirty water, it is advisable to rinse with distilled water and dry the sight, as with any quality optical equipment.

Warranty

The Fast Fire 2 is covered by the
Burris Forever Warranty.™



Thank you for choosing Burris. You can be confident that the optic you purchased is built to the most exacting standards. You can count on Burris to perform every time you use it.

We're so confident in the craftsmanship of our products that we back them with a no questions asked Forever Warranty.

We will repair or replace your Burris optic if it is damaged or defective. The warranty is automatically transferred to future owners.

- No repair or replacement charge
- No warranty card needed
- No receipt required
- No questions asked



Burris Company

331 East 8th St.
Greeley, CO 80631
(970) 356-1670

BurrisOptics.com
Facebook.com/BurrisOptics
INSTR-9020