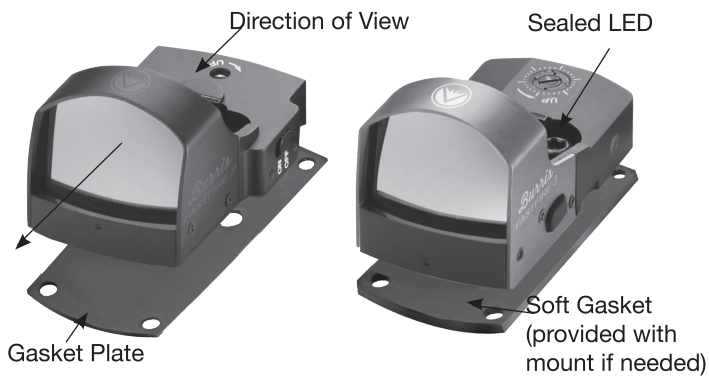


FastFire™ Base Mounting Instructions



► **Note:** If your installation of the Dovetail Block requires tapping to assist the process, first install one of the screws provided into the threaded hole on the side you are impacting. This will prevent deformation of the threaded hole in the Dovetail Block.

► **Note:** In designing the FastFire to mount very low, and take the abuse of recoil, Burris specified mounting screw lengths to bear on maximum threads available. Occasionally a mounting screw will prove slightly long in a particular installation. If

you encounter this simply file the end of the screw to reduce length and hold the mount firmly.

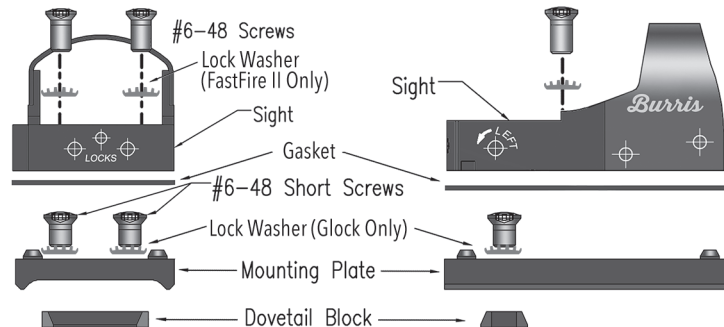
► **Note:** FastFire 2 USERS ONLY
 • The provided gasket is necessary to make the FastFire 2 completely waterproof.
 • The provided lock washers are necessary to use on the Sight attachment screws.

- 410319 Glock (All Models), Beretta PX4 Storm
- 410321 1911 Standard
- 410324 Beretta 92, 96, 90 TWO, Cougar & Taurus PT99
- 410327 Sig Sauer
- 410328 Springfield XD
- 410336 Smith & Wesson M&P

- Drive the rear sight out of its Dovetail Slot with a suitable drift pin (brass) or a fixture intended for this purpose. Note - Beretta dovetails are tapered wide on the left, so drive the sight out the left side of the slide.
- Place the supplied Dovetail Block into the slot for the rear sight and center it.
- Place the Mounting Plate over the Dovetail Block, aligning the Plate's countersunk holes with the Dovetail Block's holes. Loosely install two of the shorter #6-48 Screws through the Plate and into the Dovetail Block. Center the

Mounting Plate on the slide and tighten the Screws to 12 in-lbs. On some models, care must be taken to keep the Plate level on the slide while the screws are tightened. Burris recommends using thread locker (Loctite or similar) on these screws. An additional countersunk hole in the forward part of the Plate is provided for a skilled gunsmith to drill and tap the slide for additional support, if desired.

- Place the Sight on the Plate, aligning the screw holes. Install the two long #6-48 Screws provided and tighten to 12 in-lbs.
 - » FastFire 2: Place the gasket between the Sight and Mount. Use the supplied lock washers on the Sight attachment screws.
- Refer to sight-in instructions contained in the instruction booklet that came with the FastFire sight.

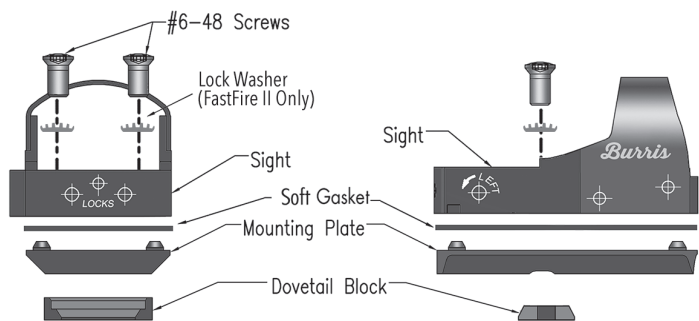


410323 Kimber 45 (all) & Bomar

- Drive the rear sight out of its Dovetail Slot with a suitable drift pin (brass) or a fixture intended for this purpose.
- Place the supplied Dovetail Block into the slot for the rear sight and center it.
- Place the Mounting Plate and Sight over the Dovetail block, aligning all holes. Loosely install the two #6-48 Screws provided, center the Sight on the slide and tighten the screws to 12 in-lbs.

» FastFire 2: Place the gasket between the Sight and Mount. Use the supplied lock washers on the Sight attachment screws.

• Refer to sight-in instructions contained in the instruction booklet that came with the FastFire sight.



410322 1911 Adjustable / Novak

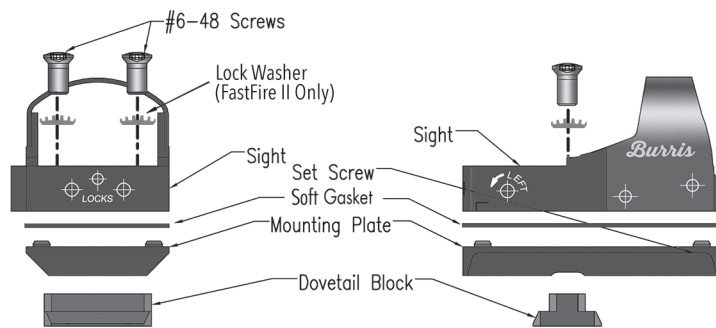
- Drive the rear sight out of its Dovetail Slot with a suitable drift pin (brass) or a fixture intended for this purpose.
- Place the supplied Dovetail Block into the slot for the rear sight and center it.
- Place the Mounting Plate over the Dovetail block, aligning the holes. Push the back of the plate down firmly against the flat area to the rear of the Dovetail. With the Plate in this position, install the set screw at the front of the plate and turn it until it just touches the slide top, then ¼ turn more. Burris recommends using thread locker (Loctite or similar) on this screw. An additional countersunk hole in

the forward part of the Plate is provided for a skilled gunsmith to drill and tap the slide for additional support, if desired.

- Place the Sight on the Mounting Plate over the Dovetail block. Loosely install the two #6-48 Screws provided, center the Sight on the slide and tighten the screws to 12 in-lbs.

» FastFire 2: Place the gasket between the Sight and Mount. Use the supplied lock washers on the Sight attachment screws.

- Refer to sight-in instructions contained in the instruction booklet that came with the FastFire sight.



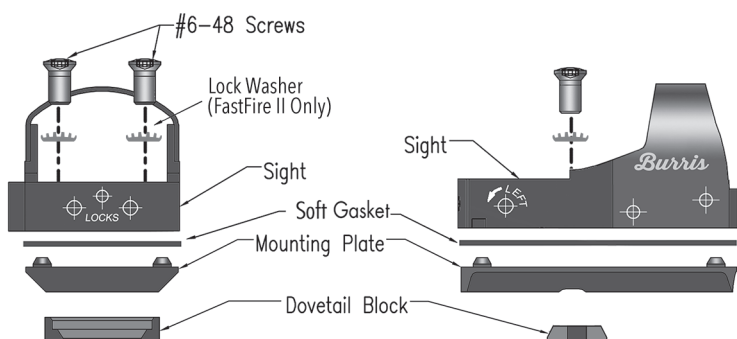
410332 Ruger Rib Mount (M-77 Bolt, #1, Super Red Hawk, Super Black Hawk Hunter)

- Place the Mounting Base onto the rear scope mount location, engaging the Mount's recoil lug in the frame/receiver recoil slot.
- While pushing the mount toward the muzzle, lightly snug the attach screw under the left side of the mount.
- Tighten the attach screw under the right side of the Mount, then tighten the attach screw under the left side of the mount.
- Place the FastFire on the base. Install the provided screws and tighten to 12

in-lbs.

» FastFire 2: Place the gasket between the Sight and Mount. Use the supplied lock washers on the Sight attachment screws.

• Refer to sight-in instructions contained in the instruction booklet that came with the FastFire sight.

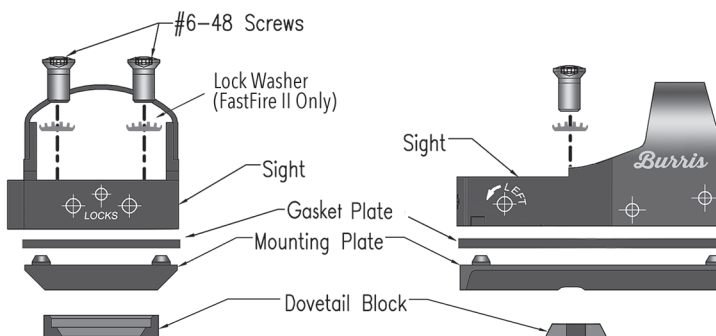


410329 Ruger Mark I, II, III, IV

- Loosen the set screw on the left side of the rear sight. Drive the rear sight out of its Dovetail Slot with a suitable drift pin (brass) or a fixture intended for this purpose.
- Place the supplied Dovetail Block into the slot for the rear sight and center it.
- Place the Mounting Plate and Sight over the Dovetail block, aligning all

holes. Loosely install the two #6-48 Screws provided, taking care to keep the Plate and Sight level on the receiver while the screws are tightened and tighten the screws to 12 in-lbs.

- Refer to sight-in instructions contained in the instruction booklet that came with the FastFire sight.



410334 Winchester M94 pre-drilled and tapped, with drill/tap guidelines included.

Note: If you have an Angle Eject model or other pre-tapped receiver, proceed with the instructions below. If your receiver is not drilled and tapped, that will need to be done first. You are responsible for the drill & tap operation; we suggest you have it done by a competent gunsmith.

- Place the Mounting Plate on the rear of the receiver, aligning the wider set of Mounting Plate holes with the threaded receiver holes. Install the provided Cap Screws into the holes and tighten them to 12 in-lbs. Burris recommends using thread locker (Loctite or similar) on these screws.
- Place the FastFire on the base. Install the provided screws and tighten to 12 in-lbs.

- » FastFire 2: Place the gasket between the Sight and Mount. Use the supplied lock washers on the Sight attachment screws.
- Install one of the included pads on the front top edge of the Sight's lens hood (as shown in the picture). The pad protects the sight from damage caused by ejected cases. Clean any oil or other debris off the hood.

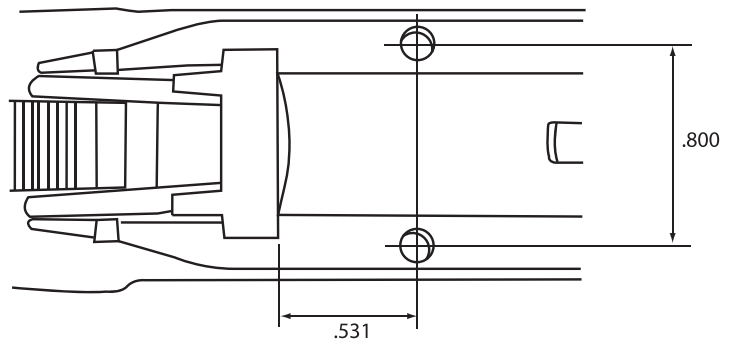


Model 94 Drill & Tap

You are responsible for the drill & tap operation. Burris recommends you have it done by a competent gunsmith.

- #31 Tap drill (.120Dia.) .175 Max. Deep. Do not break through.
- #6-48 Tap .150 Min. Full Thread Depth.

(Taps: Brownells Plug Tap # 395-648-102 & Bottoming Tap # 395-648-103)



410333 Marlin 336, 444, 1895 pre-drilled and tapped

- Burris recommends using the rear set of factory drilled and tapped holes. Remove the two plugs from the mounting holes.
- Place the Mounting Base on top of the receiver, aligning the Mounting Plate holes with the threaded receiver holes. Install the larger #8 screws provided and tighten to 12 in-lbs. Burris recommends using thread locker (Loctite or similar) on these screws.

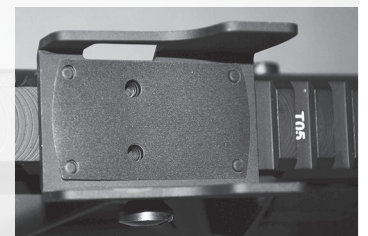
- Place the FastFire on the base. Install the provided screws and tighten to 12 in-lbs.
- » FastFire 2: Place the gasket between the Sight and Mount. Use the supplied lock washers on the Sight attachment screws.
- Refer to sight-in instructions contained in the instruction booklet that came with the FastFire sight.



**410330 Picatinny Protector Mount
410335 Weaver/Picatinny Mount
410348 AR-F3 Flat Top Mount**

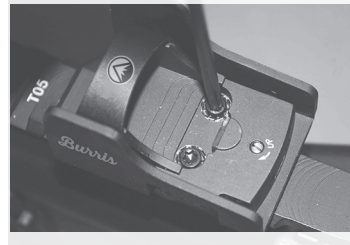
- Place the Mount on the Picatinny rail or Weaver base with the cross bolt engaging a slot. Positions toward the rear of the receiver maximize field of view. Push forward on the Mount as you tighten the mounting nut.

- » FastFire 2: Place the gasket between the Sight and Mount. Use the supplied lock washers on the Sight attachment screws.



- Place the FastFire on the base. Install the provided screws and tighten to 12 in-lbs.

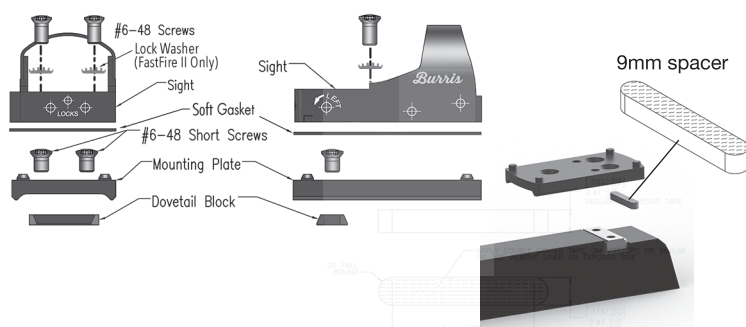
- Refer to sight-in instructions contained in the instruction booklet that came with the FastFire sight.



410318 Ruger American Pistol

- Drive the rear sight out of its Dovetail Slot with a suitable drift pin (brass) or a fixture intended for this purpose.
- Place the supplied Dovetail Block into the slot for the rear sight and center it.
- Place the Mounting Plate over the Dovetail Block, aligning the Plate's countersunk holes with the Dovetail Block's holes. Loosely install two of the shorter #6-48 Screws through the Plate and into the Dovetail Block. Center the Mounting Plate on the slide and tighten the Screws to 12 in-lbs. Care must be taken to keep the Plate level on the slide while the screws are tightened. Burris recommends using thread locker (Loctite or similar) on these screws. An additional

- countersunk hole in the forward part of the Plate is provided for a skilled gunsmith to drill and tap the slide for additional support, if desired. **Note: If installing onto a 9mm model, you must use the included spacer to keep the Mounting Plate level.**
- Place the Sight on the Plate, aligning the screw holes. Install the two long #6-48 Screws provided and tighten to 12 in-lbs.
- » FastFire 2: Place the gasket between the Sight and Mount. Use the supplied lock washers on the Sight attachment screws.
- Refer to sight-in instructions contained in the instruction booklet that came with the FastFire sight.



331 East 8th St., Greeley, CO 80631
Ph: (970) 356-1670 Fax: (970) 356-8702
www.burrisoptics.com