



Glock MOS Fastfire Mounting Instructions



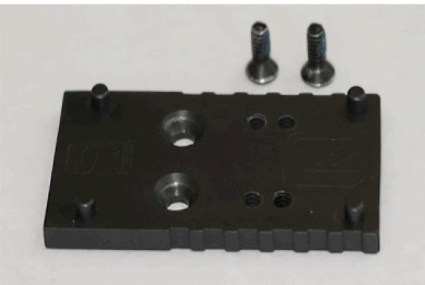
Step 1: Remove the original MOS slide plate.



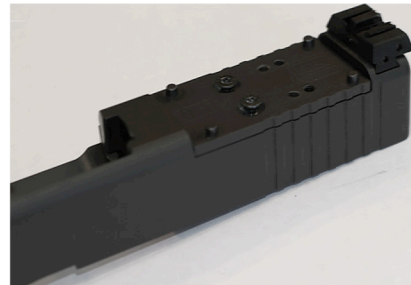
Step 2: Set aside the screws that were removed from the slide plate for use later on.



Step 3: Locate the Glock MOS Adapter-Set in your Glock packaging.



Step 4: Plate 01 is required to mount Fastfire III sights.



Step 5: Secure plate 01 to the Glock MOS slide with the provided short screws in the Glock MOS Adapter-Set packaging.



Step 6: Attach the Fastfire III optic to the Glock MOS plate 01 utilizing the four locating pins.



Step 7: Please contact Tech Support Via our Support Portal to setup a parts request for the appropriate screws: <https://burris.supportsync.com/>



Step 8: This completes the installation of the Fastfire III on the Glock MOS pistol.